

# Workshop Linux Mint Installeren en configureren

Ton Valkenburgh

# Doel van de workshop

- Installeren van Linux Mint Cinnamon;
- Door de instellingen lopen;
- Na afloop:
  - ◆ Weet je hoe je Linux installeert:
  - ◆ Weet je de weg binnen Linux Mint Cinnamon.

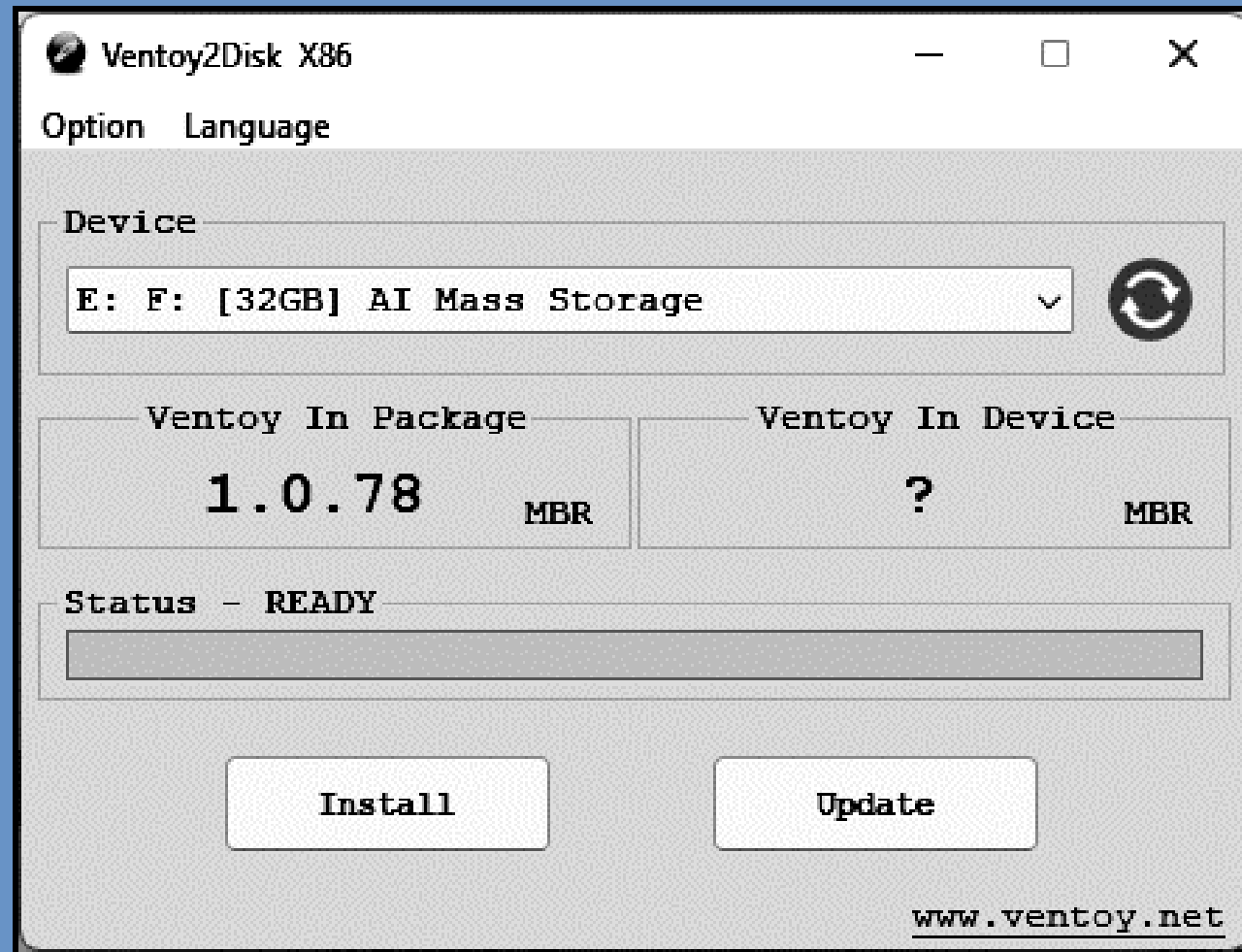
# Live-USB-stick

- Download Linux Mint Cinnamon;
- Maak een live-USB-stick:
  - ◆ Rufus, Startup Disk Creator, Ventoy.
- Start vanaf Live-USB-stick;
- Eventueel: start de installatie.

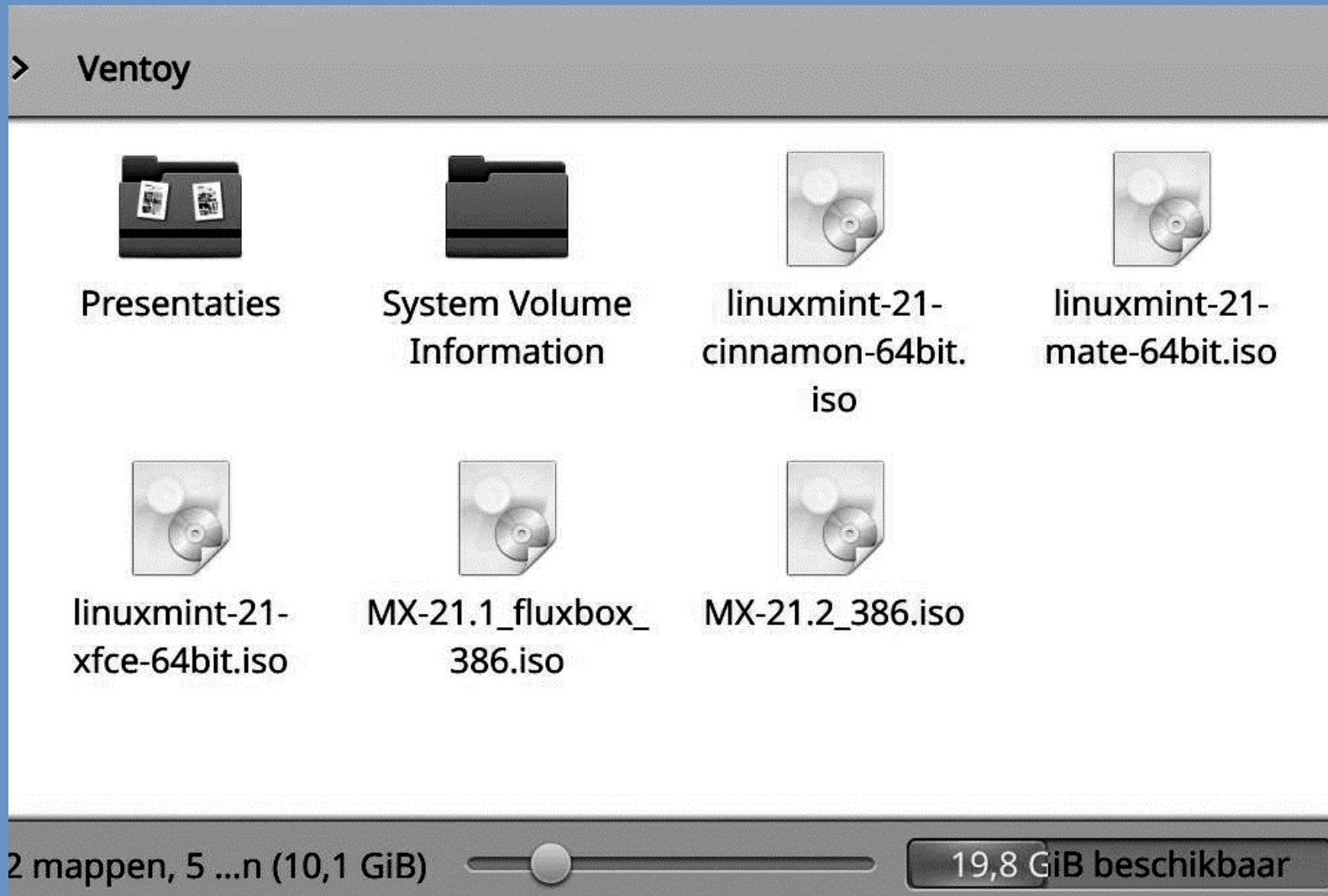
# Ventoy

- Downloaden: <https://ventoy.net/en/download.html>;
- Start: Ventoy2Disk.exe:
- Selecteer USB-stick;
- Klik: Install;
- Kopieer ISO-bestanden naar Ventoy;
- *Secure boot* uitschakelen of *Machine Owner Key* toevoegen.

# Ventoy installeren

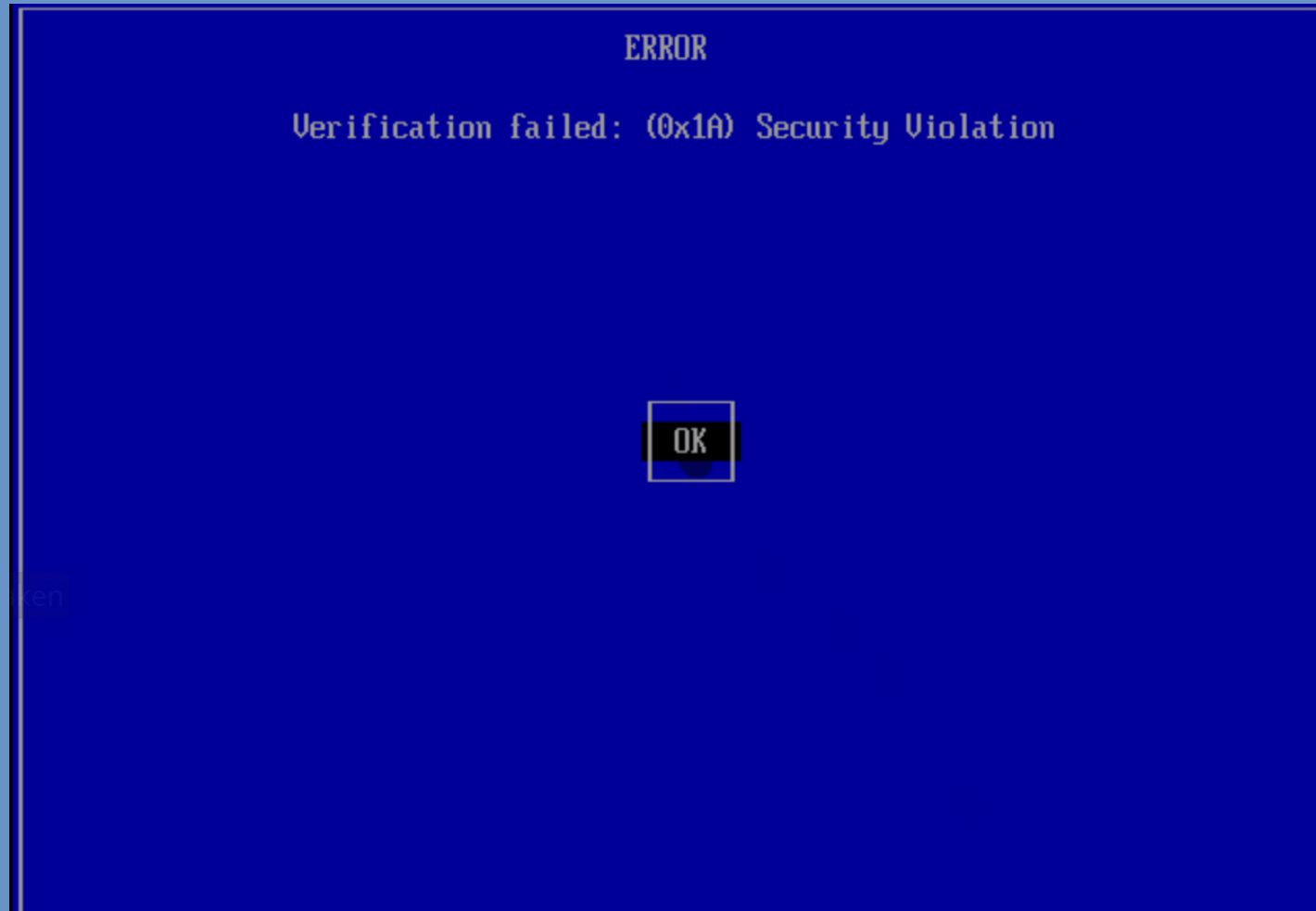


# Ventoy ISO's



# Secure boot error

- We moeten nu een *Machine Owner Key* toevoegen



# Press any key

Shim UEFI key management

Press any key to perform MOK management

Booting in 10 seconds

# Enroll key from disk

Perform MOK management

Continue boot  
Enroll key from disk  
Enroll hash from disk

# Select key

## Select Key

The selected key will be enrolled into the MOK database  
This means any binaries signed with it will be run without prompting  
Remember to make sure it is a genuine key before Enrolling it

UTOYEFI

# Bevestig key

## Select Key

The selected key will be enrolled into the MOK database  
This means any binaries signed with it will be run without prompting  
Remember to make sure it is a genuine key before Enrolling it

```
grub/  
ventoy/  
EFI/  
ENROLL_THIS_KEY_IN_MOKMANAGER.cer  
tool/
```

# Continue



# Enroll the keys



# Reboot

Perform MOK management

Reboot

Enroll key from disk

Enroll hash from disk

# Ventoy opgestart



# MX



# Compatibility mode

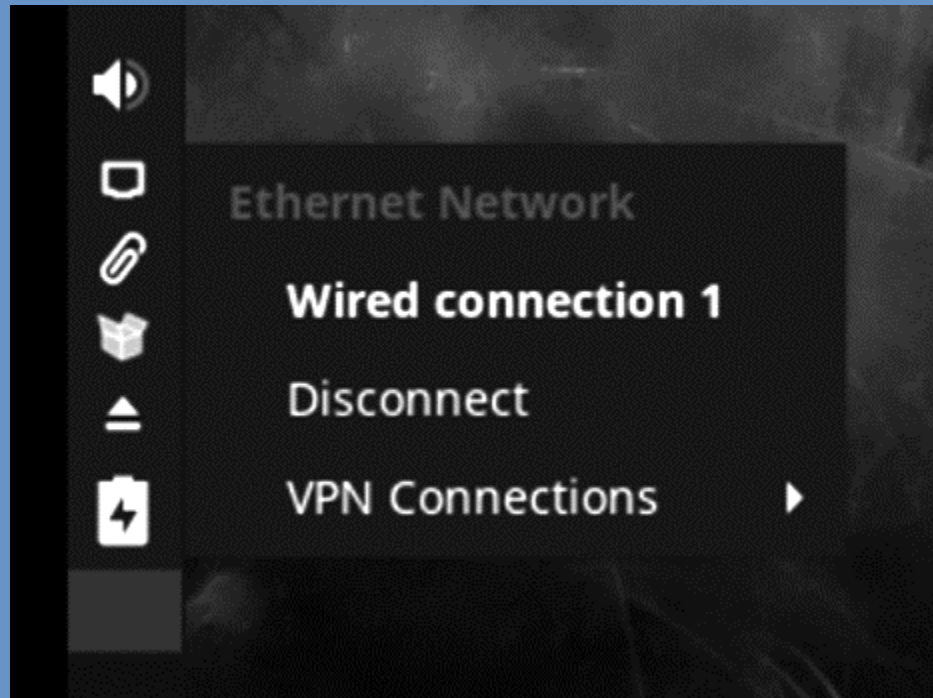
- Bij problemen met video-driver (meestal NVIDIA);
  - Bij opstartscherm **e** intoetsen
  - Vervang *quiet splash* door *nomodeset*;
  - Bij herstart na installatie:
    - Kies in het opstartscherm: **e**;
    - Vervang *quiet splash* door *nomodeset*;
    - Toets *F10* om op te starten;
- Daarna: *Menu* > Menu > MX tools Nvidea driver installeerder;
- Installeer de laatste video-driver.

# MX Welkom



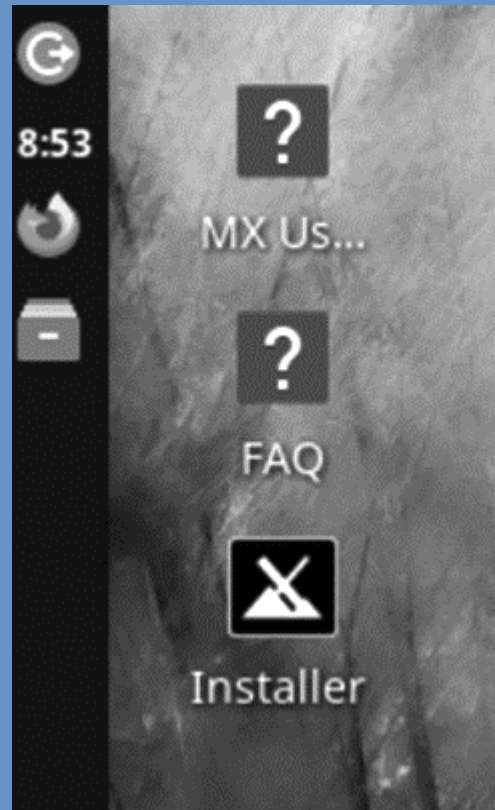
# Netwerkinstellingen

- Klik op het netwerksymbool linksonder



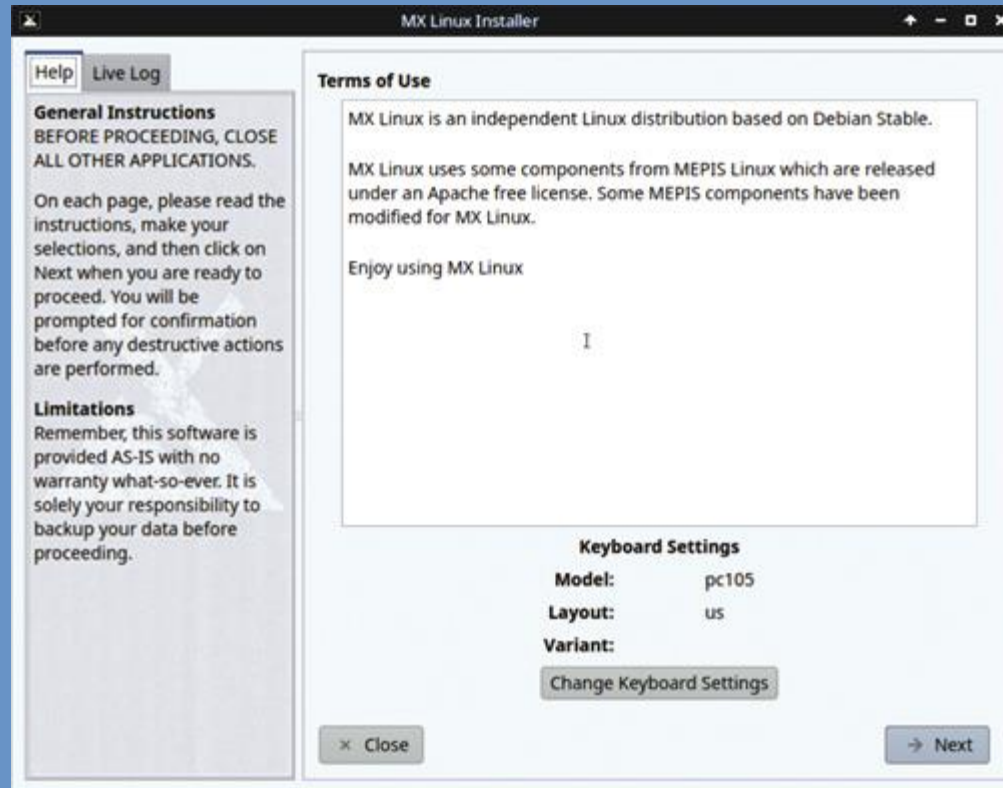
# Start installatieproces

- Dubbelklik op *Installer*



# Kies toetsenbord

- Kies het toetsenbord en klik op *Change keyboard settings*

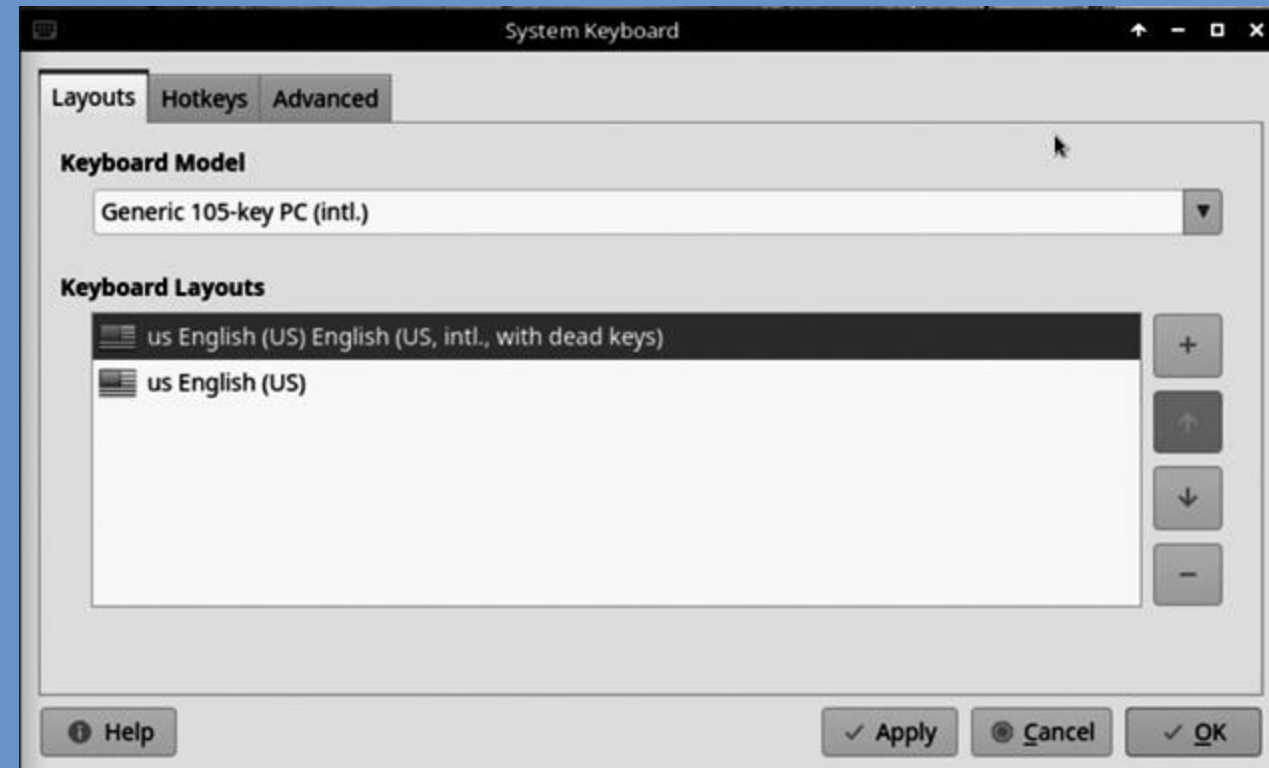


# Kies toetsenbord

- English (US, international AltGr Unicode combining)
- English (US, international AltGr Unicode combining, alternative)
- English (US, intl., with dead keys)

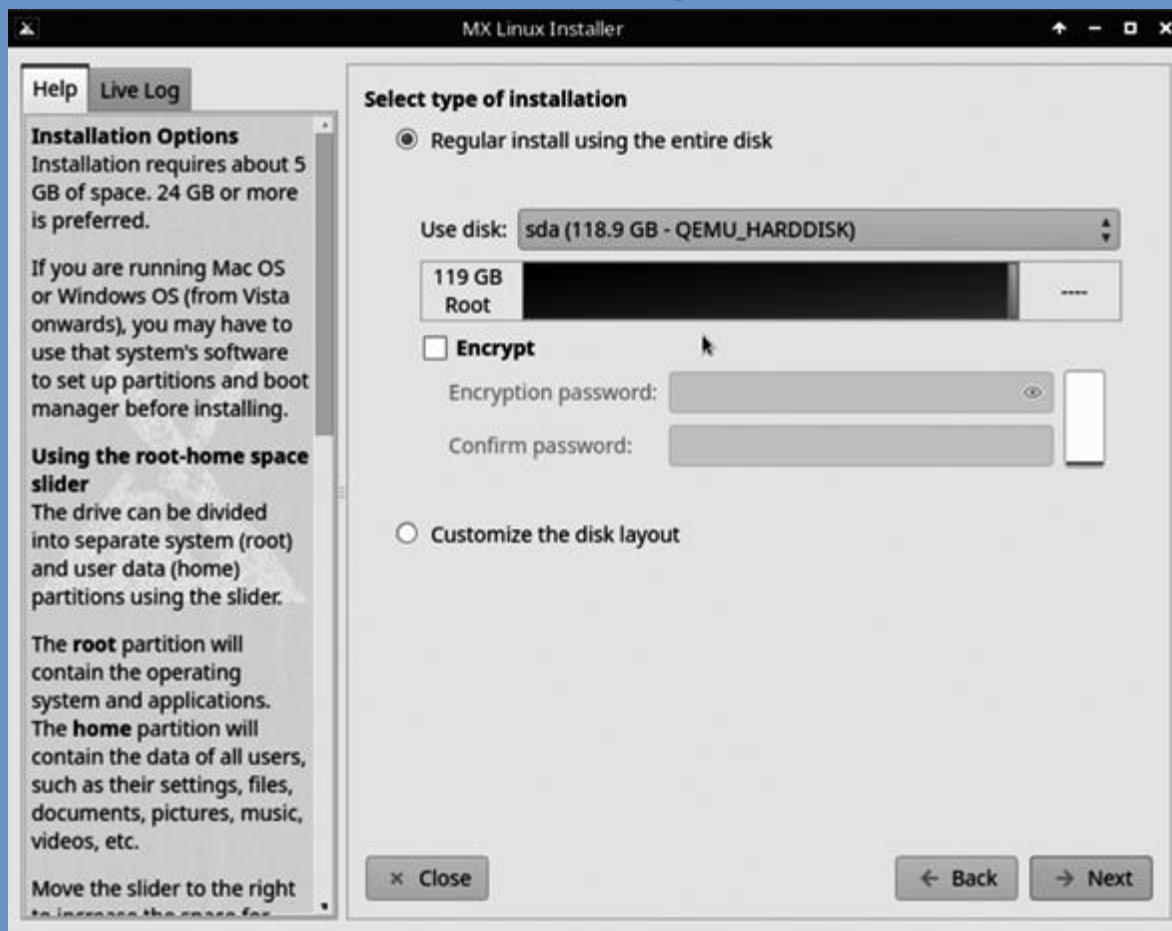
- Drie opties voor US toetsenbord;
- Kies de gewenste;
- Verplaats naar boven;
- Windows oplossing voor de optie AltGr:

<https://github.com/riesinger/us-intl-altgr-dead-keys>

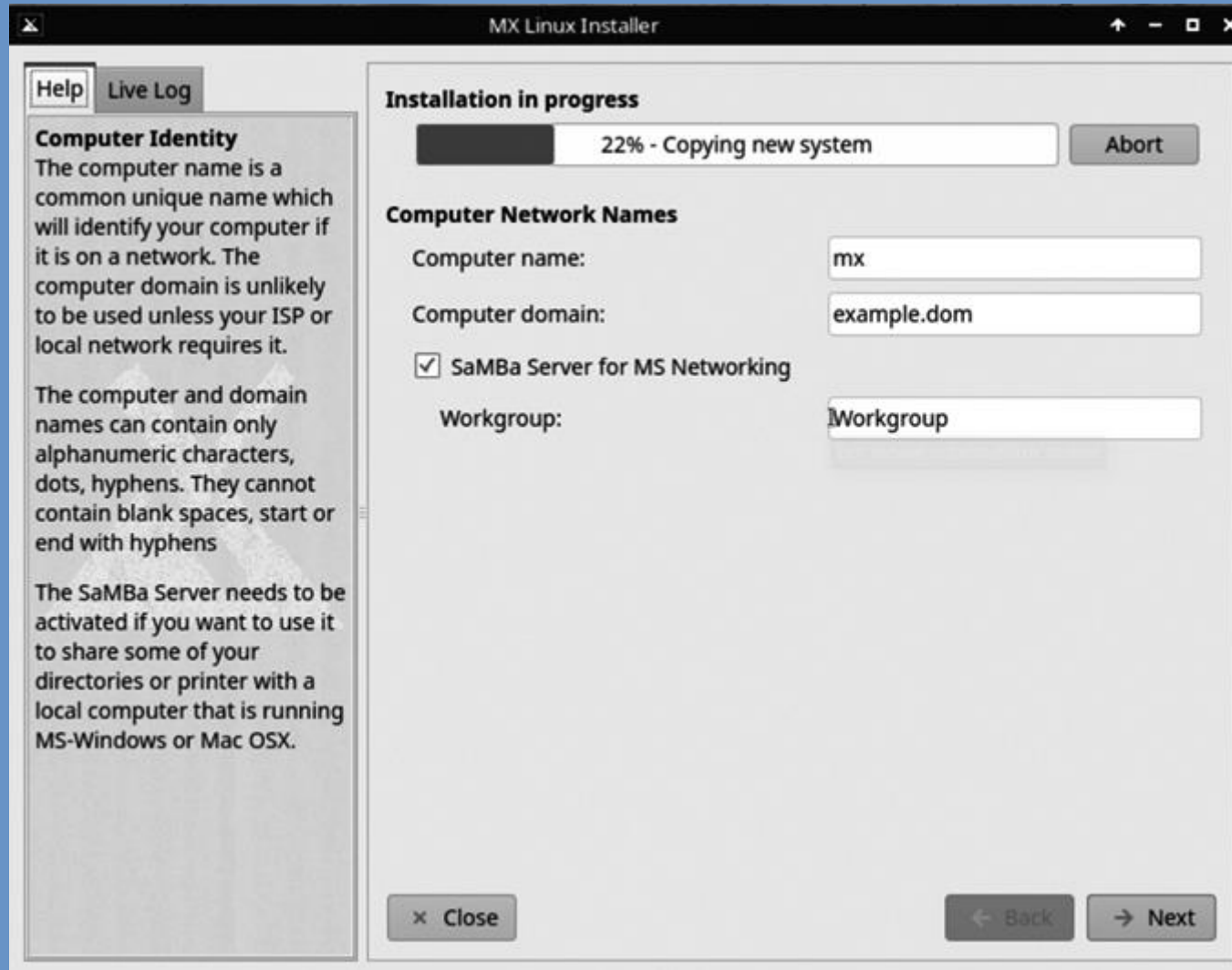


# Installatietype

- Bepaal je keuze en klik op *Installeer nu*



# Installatie voortgang



The screenshot shows the MX Linux Installer window. The title bar reads "MX Linux Installer". On the left, there are two tabs: "Help" (selected) and "Live Log". The "Help" tab contains the following text:

**Computer Identity**  
The computer name is a common unique name which will identify your computer if it is on a network. The computer domain is unlikely to be used unless your ISP or local network requires it.

The computer and domain names can contain only alphanumeric characters, dots, hyphens. They cannot contain blank spaces, start or end with hyphens

The SaMBa Server needs to be activated if you want to use it to share some of your directories or printer with a local computer that is running MS-Windows or Mac OSX.

The main area of the window is titled "Installation in progress" and shows a progress bar at 22% with the text "Copying new system" and an "Abort" button. Below this is the "Computer Network Names" section with the following fields and options:

- Computer name:
- Computer domain:
- SaMBa Server for MS Networking
- Workgroup:

At the bottom of the window, there are three buttons: "Close", "Back", and "Next".

# Systeemgegevens (1)

MX Linux Installer

Help Live Log

**Computer Identity**  
The computer name is a common unique name which will identify your computer if it is on a network. The computer domain is unlikely to be used unless your ISP or local network requires it.

The computer and domain names can contain only alphanumeric characters, dots, hyphens. They cannot contain blank spaces, start or end with hyphens

The Samba Server needs to be activated if you want to use it to share some of your directories or printer with a local computer that is running MS-Windows or Mac OSX.

**Installation in progress**  
94% - Paused for required operator input

**Computer Network Names**

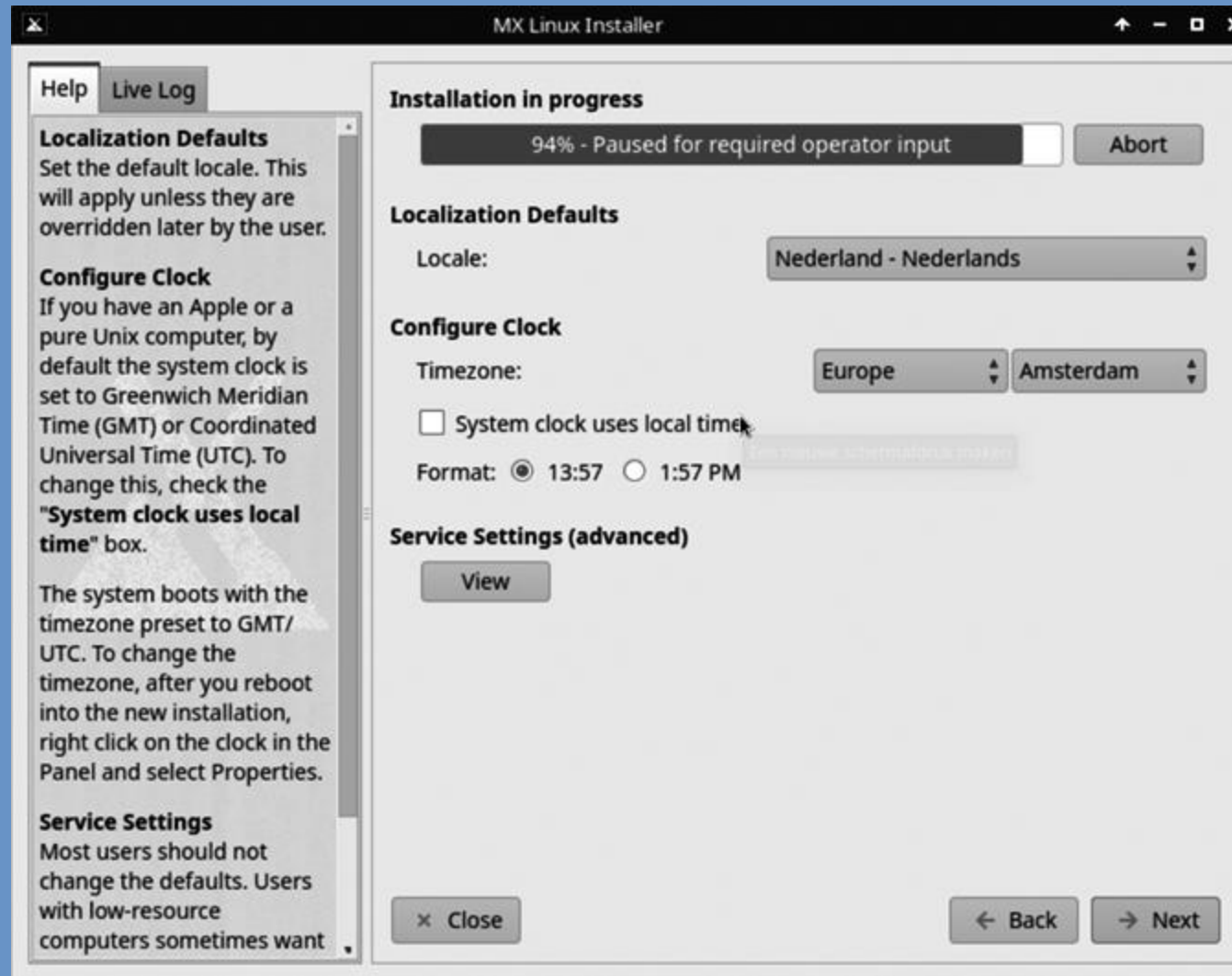
Computer name:

Computer domain:

Samba Server for MS Networking

Workgroup:

# Stelsysteemgegevens (2)



# Gebruikergegevens

MX Linux Installer

Help Live Log

**Default User Login**  
The root user is similar to the Administrator user in some other operating systems. You should not use the root user as your daily user account. Please enter the name for a new (default) user account that you will use on a daily basis. If needed, you can add other user accounts later with MX Linux User Manager.

**Passwords**  
Enter a new password for your default user account and for the root account. Each password must be entered twice.

**No passwords**  
If you want the default user account to have no password, leave its password fields empty. This allows you to log in without requiring a password. Obviously, this should only

**Installation in progress**  
94% - Paused for required operator input

**Default User Account**

Default user login name:

Default user password:

Confirm user password:

**Root (administrator) Account**

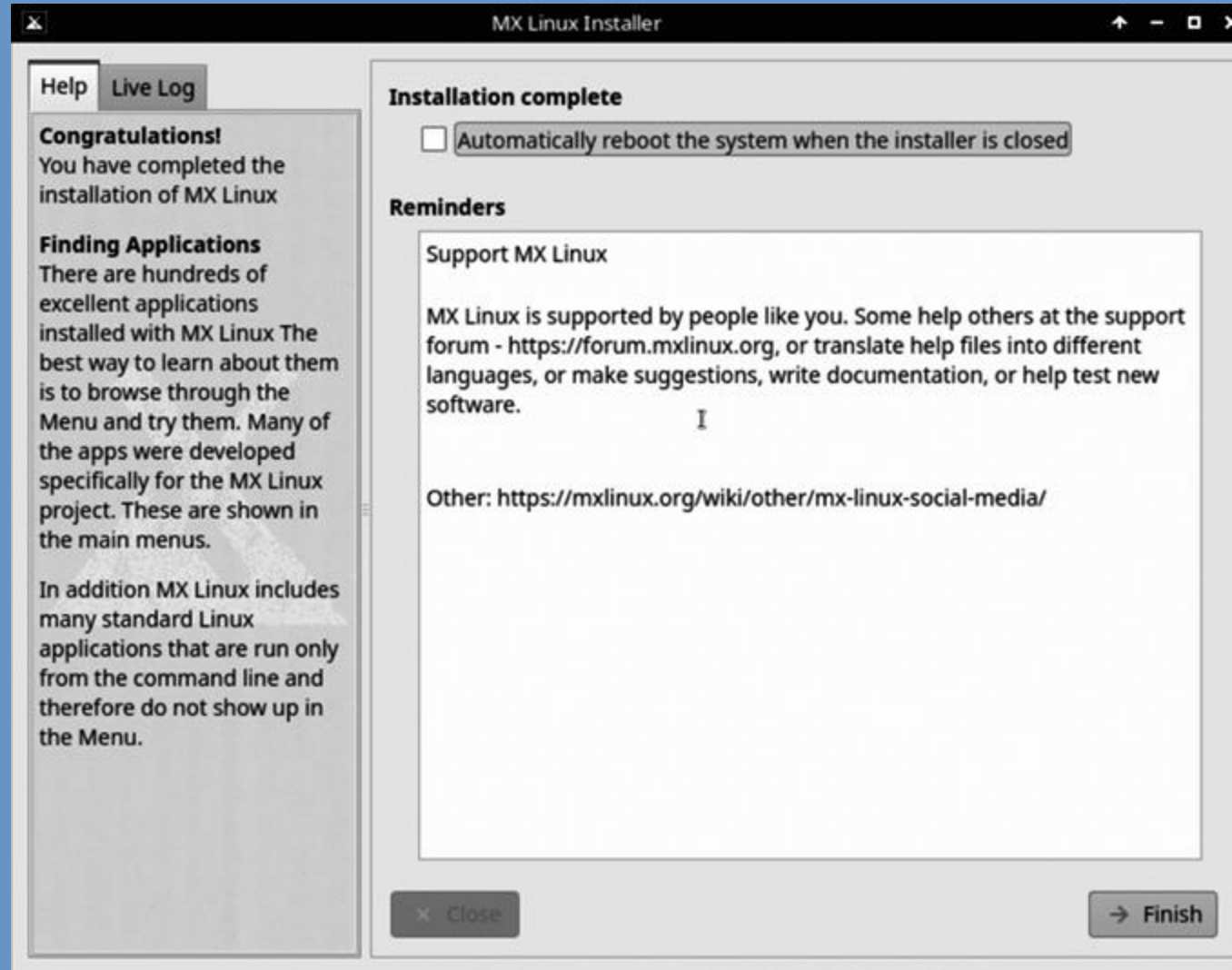
Root password:

Confirm root password:

Autologin

Save live desktop changes

# Installatie gereed



# Nu instellingen

- Video-drivers;
- Firewall;
- Bureaublad;
- Werkbladen;
- Menustructuur;
- Updates;
- Energiebeheer;
- Muis en touchpad;
- Printer/scanner installeren;
- Programmabeheer
- Koppelen USB-schijven/sticks;
- Systeem recovery;
- Reservekopieën.

# Video-stuurprogramma's

- Menu > MX tools Nvidea driver installeerder

```
Terminalvenster -
Bestand  Bewerken  Beeld  Terminalvenster  Tabbladen  Hulp
Distribution:  MX

INSTALL IS nvidia
slot creëren ...
=====
ddm-mx: 22.08.03
kernel release: 5.10.0-17-@86-pae
kernel version: #1 SMP Debian 5.10.136-1 (2022-08-13)
command parameters: -i nvidia
=====

Installeer drivers voor: nvidia
Start op (m/d/j): 09/04/2022 15:54:53
=====

Om open source aanstuurprogramma's te herstellen gebruik:
sudo ddm-mx -p nvidia

=====

No nvidia card found - exiting

Druk <Enter> om te beëindigen
```

```
Terminalvenster -
Bestand  Bewerken  Beeld  Terminalvenster  Tabbladen  Hulp
Pakketconfiguratie

Bezig met configureren van xserver-xorg-video-nvidia-legacy-390xx

Conflicterende nouveau-kernelmodule ingeladen

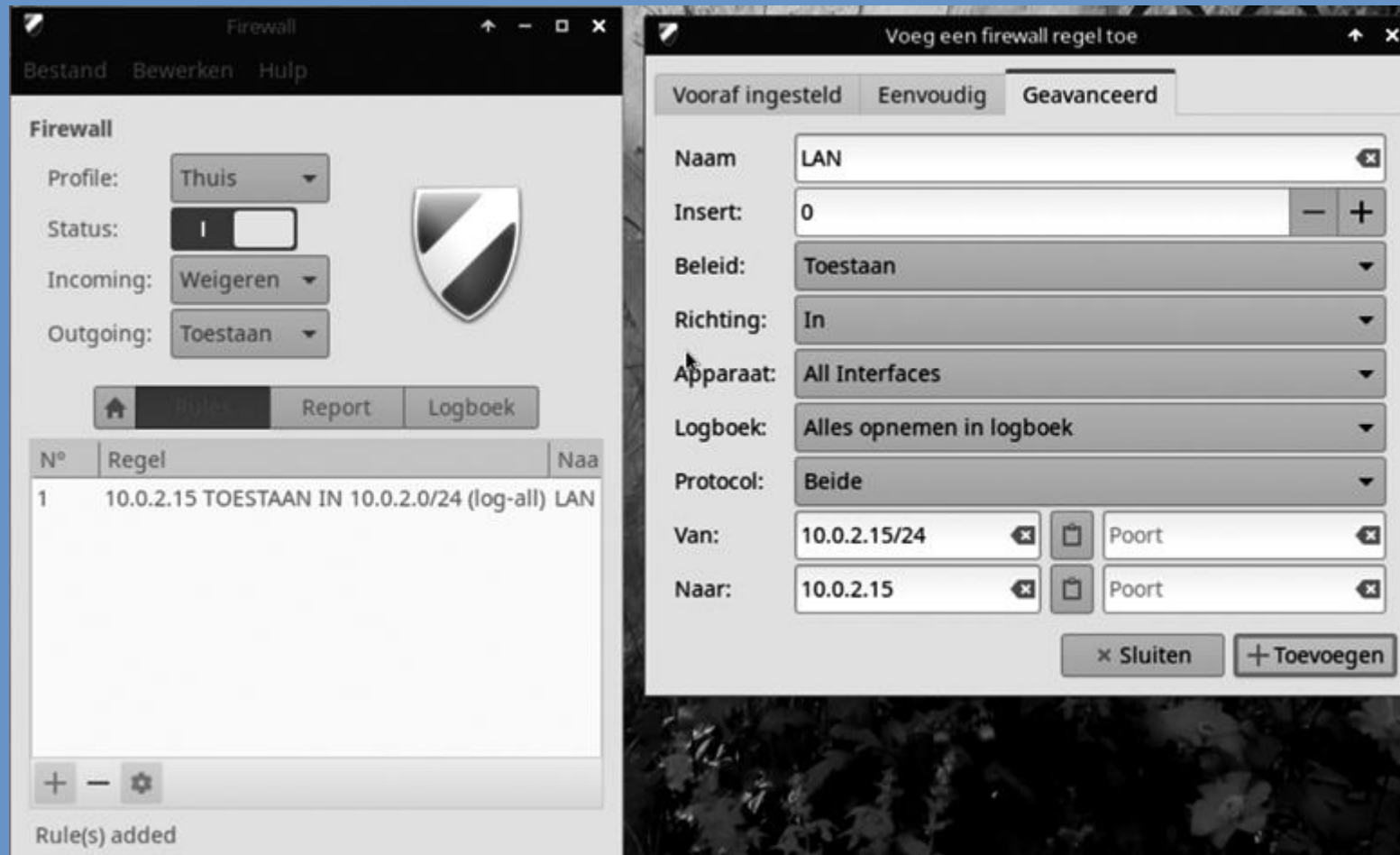
De vrije kernelmodule nouveau is op dit moment ingeladen en conflicteert
met de niet-vrije kernelmodule nvidia.

De makkelijkste manier om dit op te lossen is de machine opnieuw op te
starten nadat de installatie is voltooid.

<Ok>
```

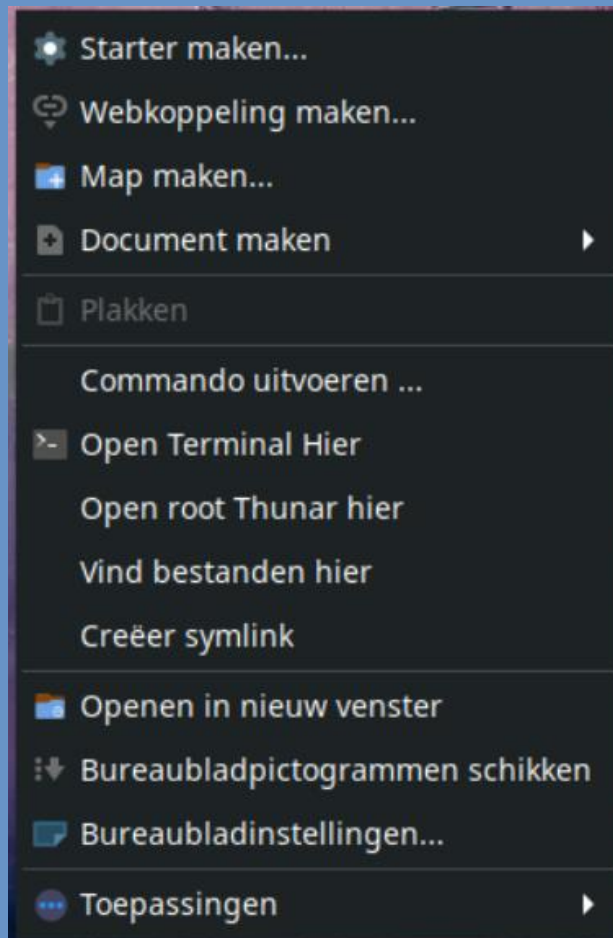
# Firewall

- Menu > Instellingen > Firewall-configuratie



# Bureaublad

- Klik met rechter muistoets binnen bureaublad



Bureaubladinstellingen

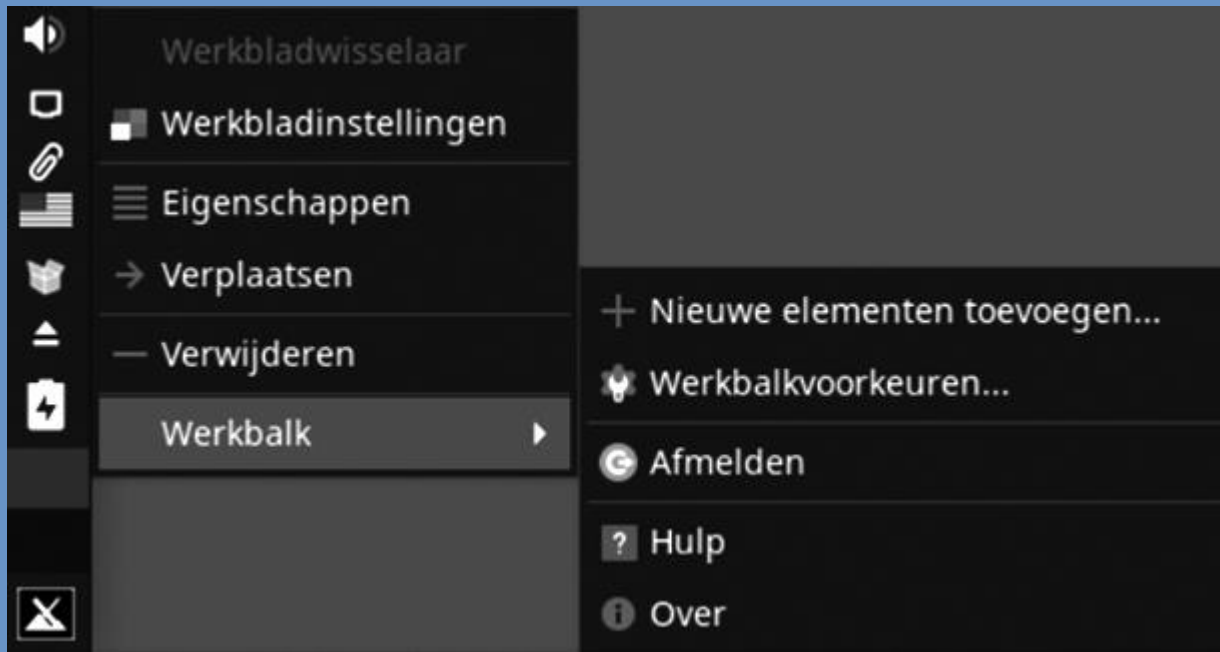


# Bureaublad pictogrammen



# Werkbladen

Klik links op de balk met de rechter muisknop op het blauwe vierkant > Werkbalk > Nieuwe elementen toevoegen



Schakel tussen de werkbladen met de gekleurde vierkanten

# Toepassingen naar bureaublad

- Menu > Kantoor: rechter muistoets op LibreOffice, klik op Voeg toe aan bureaublad

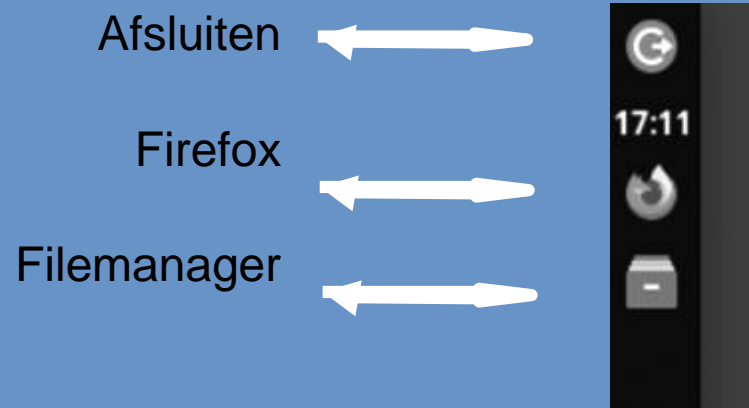


# Koppeling naar map

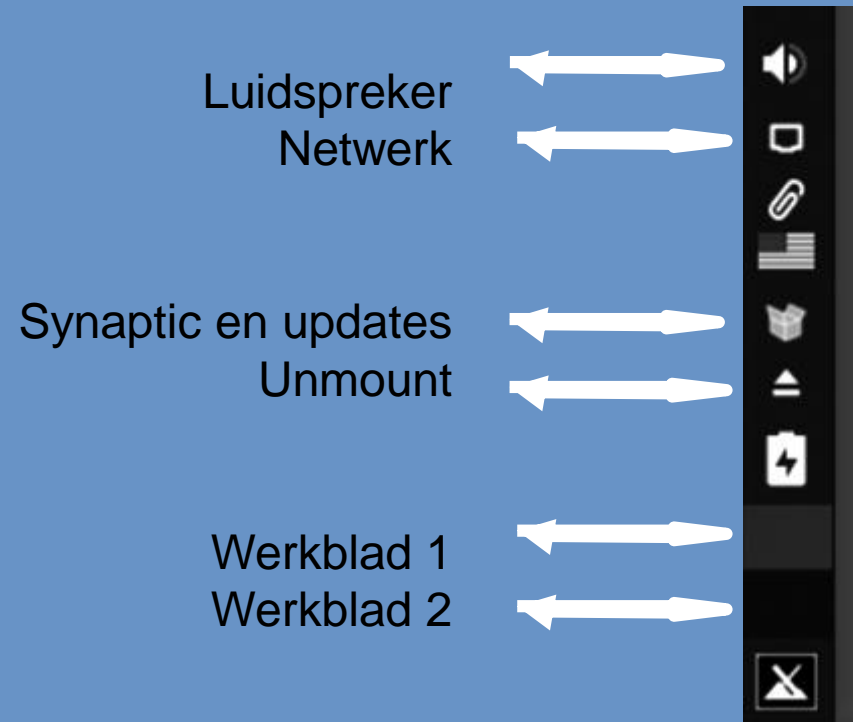
- Rechtermuisknop op map > creëer symlink;
- Sleep symlink-map naar bureaublad.




# werkbalk

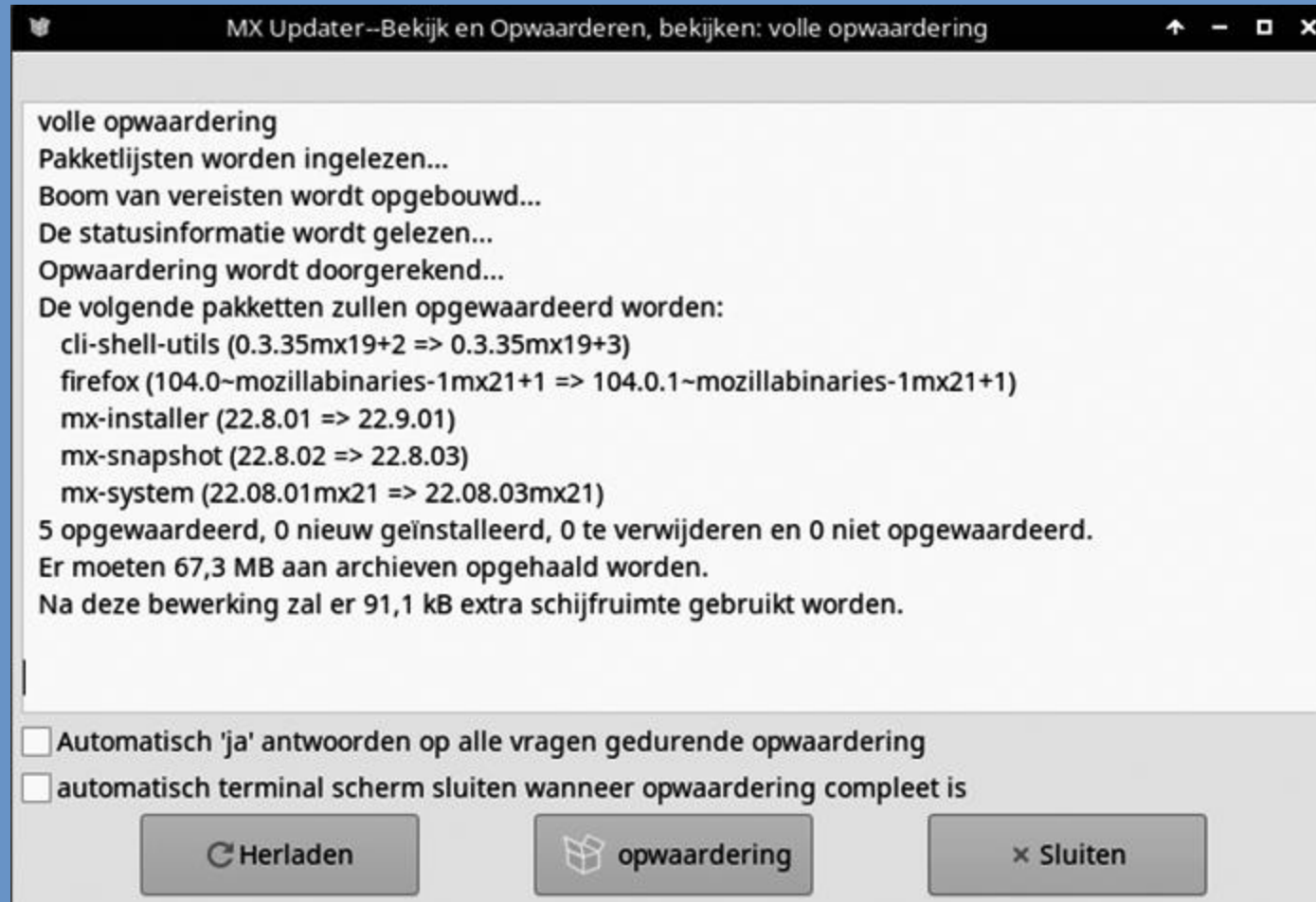


Rechter muistoets op  
werkbalk > Werkbalk >  
Nieuwe elementen  
toevoegen



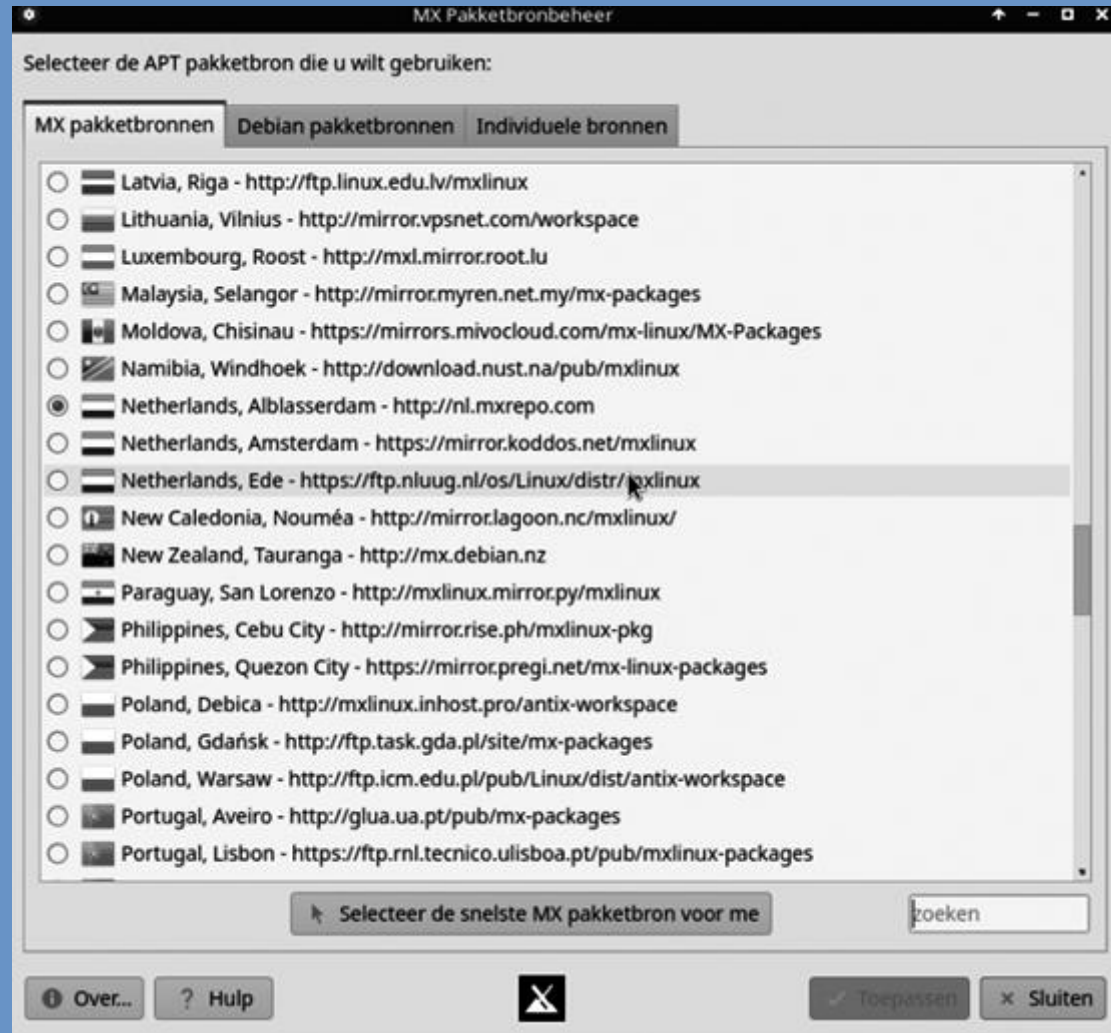
# Updates

- Klik in panel op groene doosje 



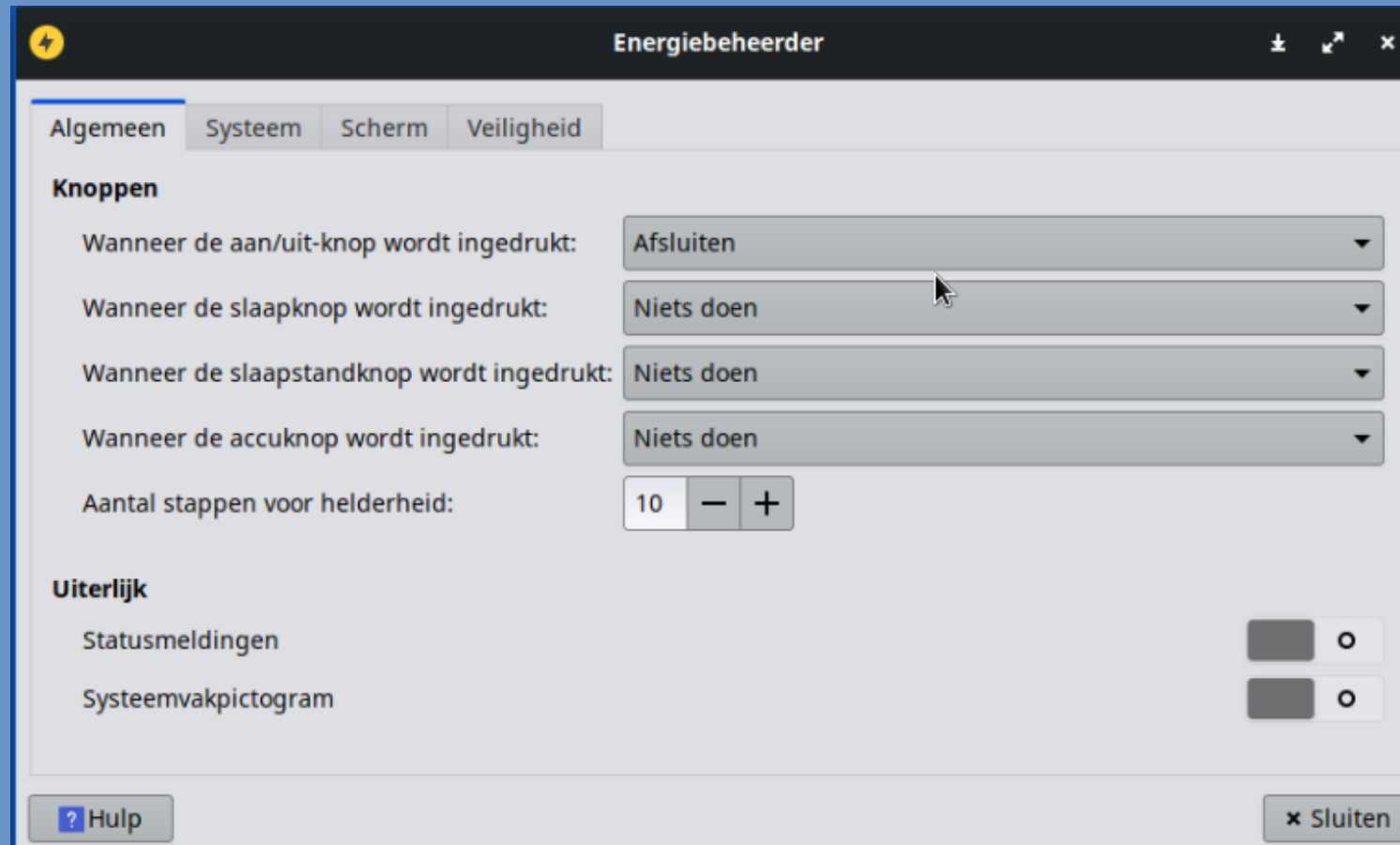
# Pakketbronbeheer

- Menu > MX Tools > MX Pakketbronbeheer



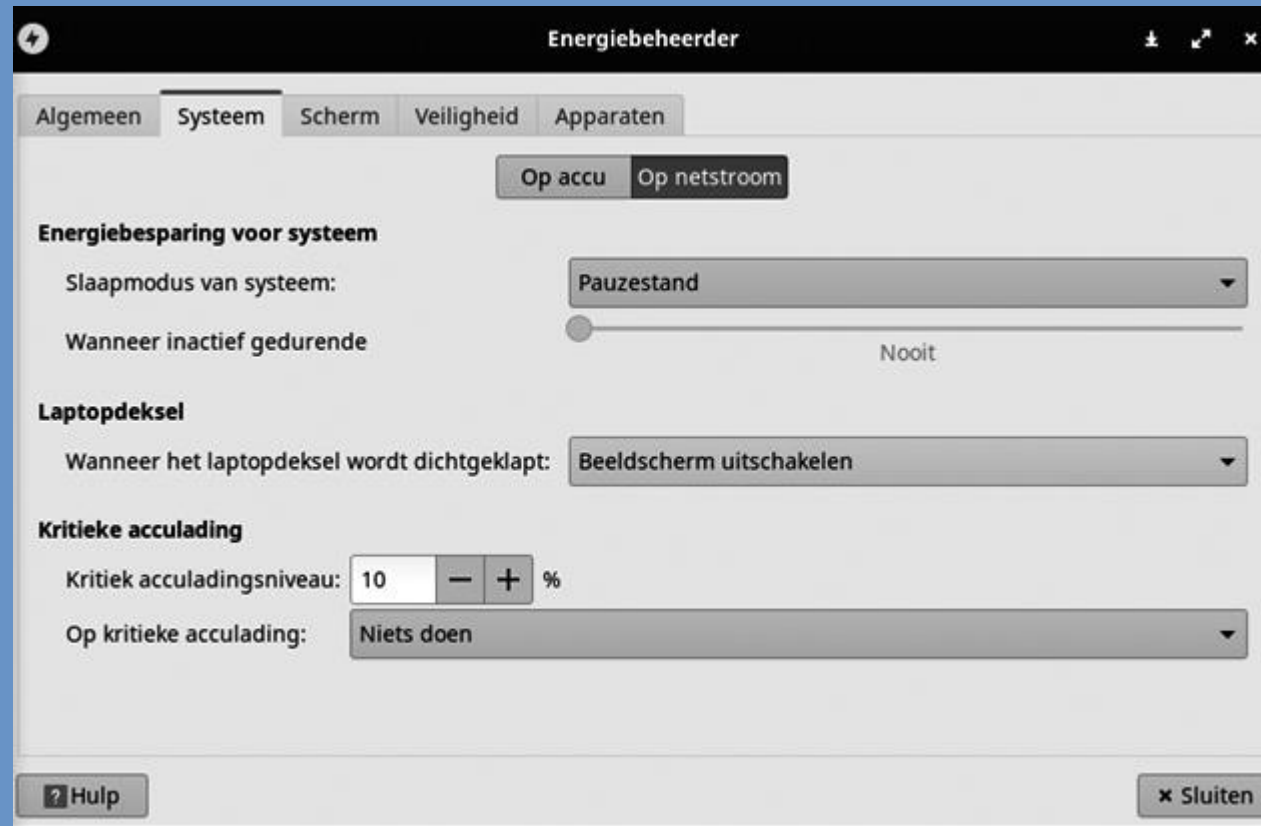
# Energiebeheer

- Menu > Instellingen > Energiebeheerder



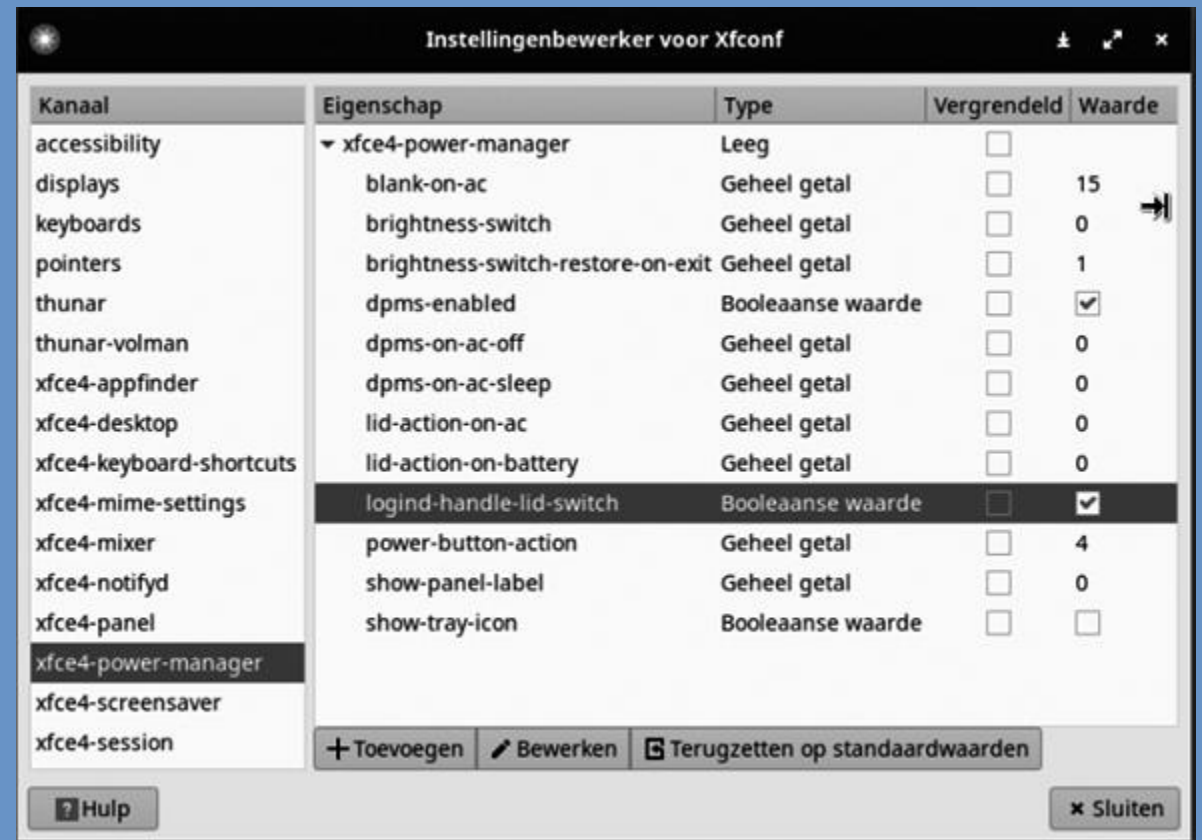
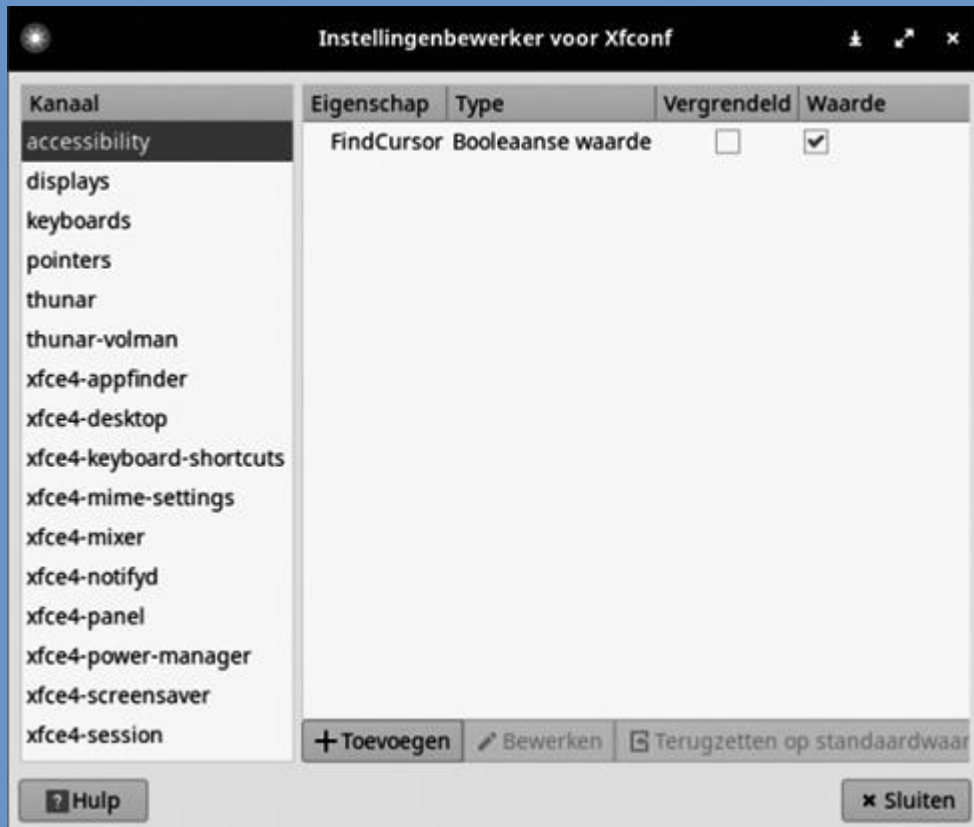
# Deksel afsluiten (1)

- Menu > Instellingen > Energiebeheerder > Systeem



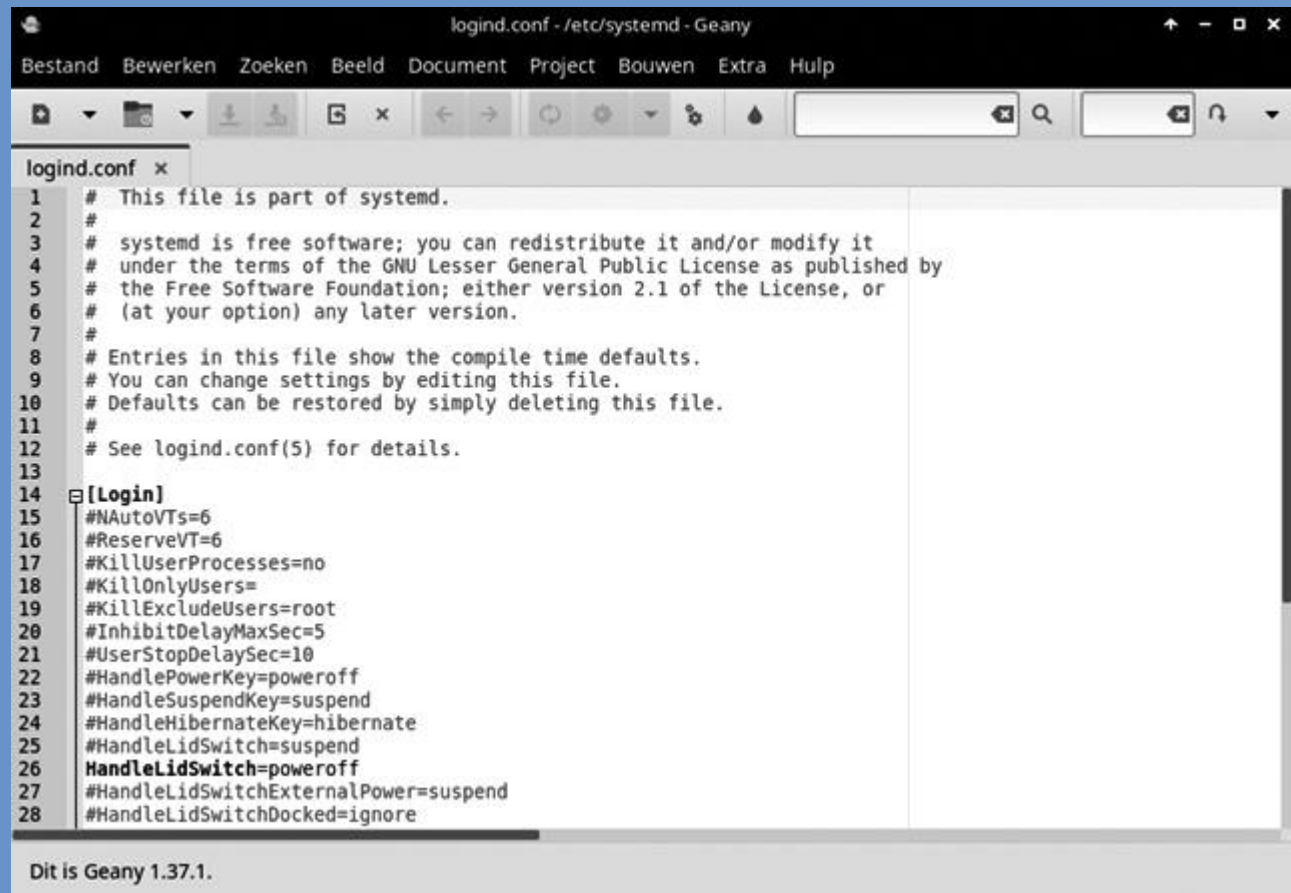
# Deksel afsluiten (2)

- Menu > Instellingen > Instellingenbewerker voor Xfconf



# Deksel afsluiten (3)

- Bestandsysteem > Etc > Systemd, open hier een terminal
- Sudo geany logind.conf, vul wachtwoord in
- Voeg zwarte text toe.



```
logind.conf - /etc/systemd - Geany
Bestand  Bewerken  Zoeken  Beeld  Document  Project  Bouwen  Extra  Hulp

logind.conf x
1  # This file is part of systemd.
2  #
3  # systemd is free software; you can redistribute it and/or modify it
4  # under the terms of the GNU Lesser General Public License as published by
5  # the Free Software Foundation; either version 2.1 of the License, or
6  # (at your option) any later version.
7  #
8  # Entries in this file show the compile time defaults.
9  # You can change settings by editing this file.
10 # Defaults can be restored by simply deleting this file.
11 #
12 # See logind.conf(5) for details.
13
14 [Login]
15 #NAutoVTs=6
16 #ReserveVT=6
17 #KillUserProcesses=no
18 #KillOnlyUsers=
19 #KillExcludeUsers=root
20 #InhibitDelayMaxSec=5
21 #UserStopDelaySec=10
22 #HandlePowerKey=poweroff
23 #HandleSuspendKey=suspend
24 #HandleHibernateKey=hibernate
25 #HandleLidSwitch=suspend
26 HandleLidSwitch=poweroff
27 #HandleLidSwitchExternalPower=suspend
28 #HandleLidSwitchDocked=ignore

Dit is Geany 1.37.1.
```

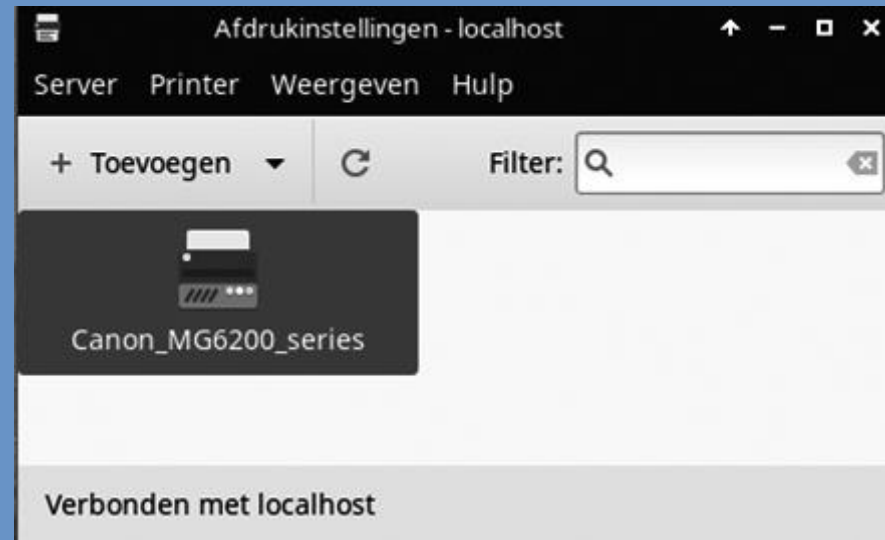
# Muis en aanraakveld

- Menu > Instellingen > Muis en aanraakveld



# Printers

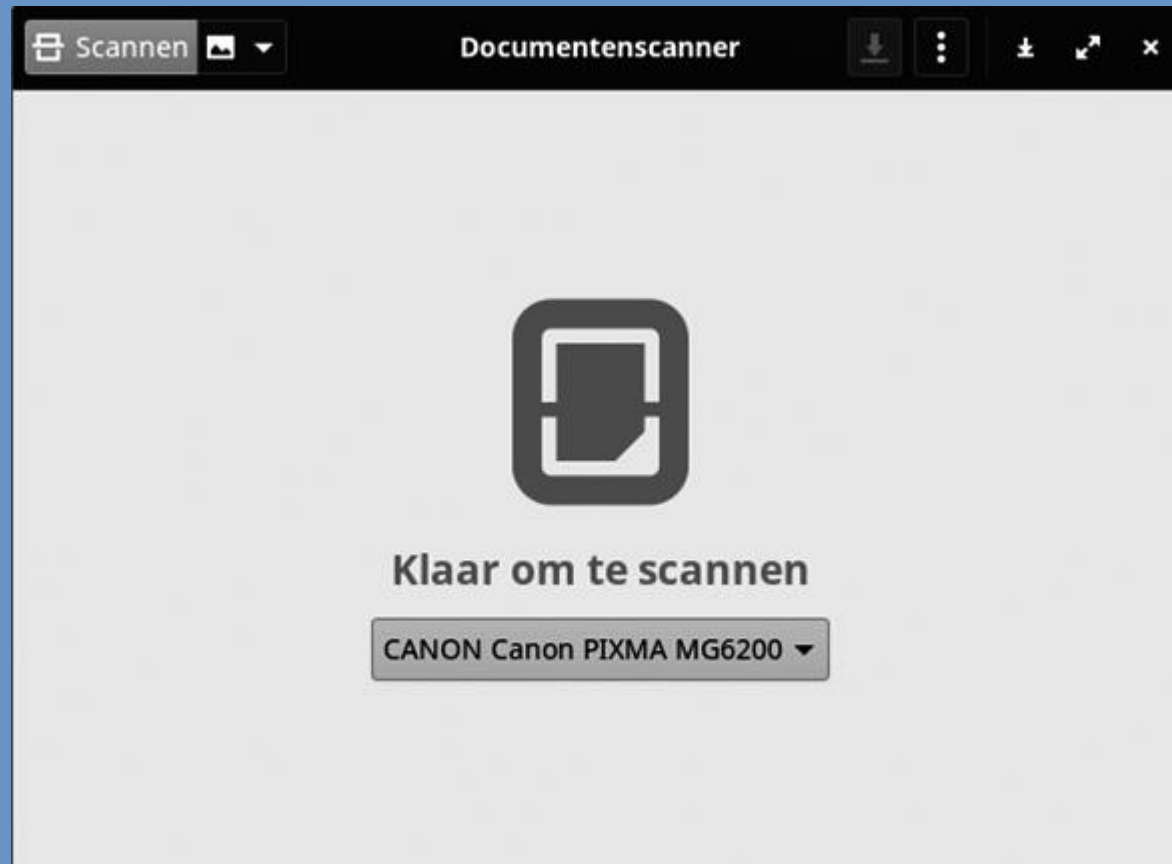
- Menu > Systeem > Afdrukbeheer



SoftwareBus 2019-6  
Common Unix Printing System

# Scanner

- Menu > Afbeeldingen > Documentenscanner



# Pakketinstalleerder

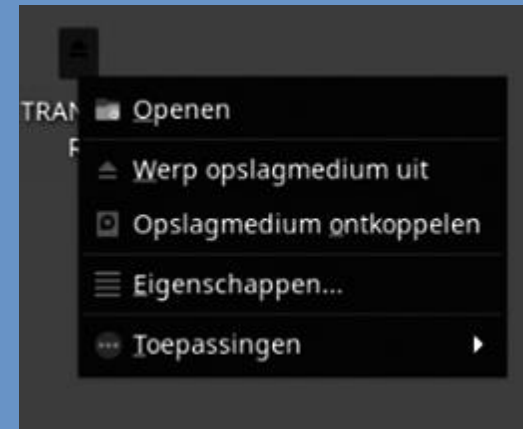
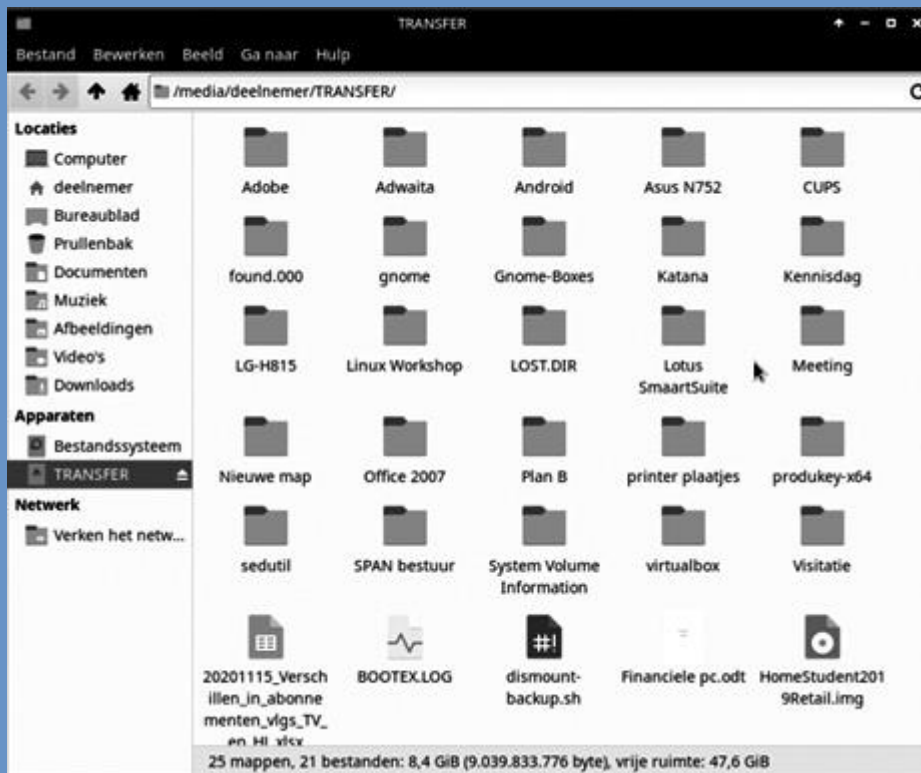
- Menu > MX Tools > MX Pakketinstalleerder



# Koppelen USB-schijf/stick

- Sluit USB-stick aan

- Rechter muistoets op icon



# Reservekopieën

- Menu > Instellingen > Lucky Backup



# Back-in-Time

- Voor:
  - Veel opties;
  - Transparant, je ziet de bestanden in de back-up;
  - Ondersteuning voor incrementele back;
  - Compressie;
  - Selectief zetten van bestanden mogelijk;
  - Meer scenario's mogelijk;
  - Kan pc uitschakelen na afloop van de back-up.
- Tegen:
  - Gebruikt zwakke versleutelingssoftware;
  - Vereist bij NAS hard link ondersteuning op NAS (SMB).
- SoftwareBus 2021-5.

# Déjà-Dup

- Voor:
  - Eenvoudig in gebruik;
  - Ondersteuning voor incrementele back-up;
  - Maakt na zekere tijd (ca. drie maanden) volledige back-up;
  - Versleutelde back-up mogelijk;
  - Selectief terugzetten van bestanden mogelijk;
  - Back-ups doorzoekbaar;
  - Back-up naar NAS (SMB) mogelijk.
- Tegen:
  - Meer tijd nodig wegens compressie en versleuteling;
  - Slechts één scenario.
- SoftwareBus 2021-4.

# Vragen?

- <https://www.compusers.nl/linux/welkom-bij-platform-linux>
- <https://www.hcc.nl/kennis/forums/unix-linux-versies>